



TOWER LAMPS – 2 TIER with Buzzer

An ISO 9001-2018
Certified Company



FEATURES

- . Lamp for easy identification of status of machine with status indication
- . Suitable for machines & equipments in high light output LED's
- . Energy Saver with IP 54 Grade Protection
- . Heat resistant & shock proof & easily mountable
- . Ideal for temperature fluctuating situations
- . Stringently checked on various criterion of performance
- . Modular design with Superior Finishing & tamperproof packaging
- . Longer functional life
- . WALL MOUNTABLE (L) BRACKET AVAILABLE

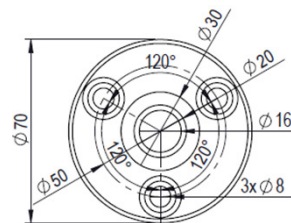
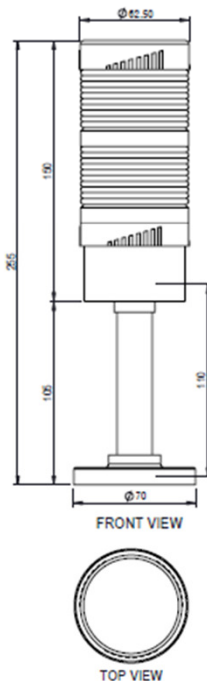
SPECIFICATIONS

INPUT VOLTAGE	12V / 24V AC/ DC, 110 V/ 220 V AC		
OPERATING TEMPERATURE	0°C - 70°C		
CONNECTION	RED / AMBER / GREEN Copper Wire		
LUMINAIRE BODY	PCB Mounted LED's		
LED POWER DISSIPATION	72 mW		
CRI	82 typical		
LED COLOUR	RED / AMBER/ GREEN / BLUE/ CLEAR		
PROTECTION GRADE	IP 54		
ALUMINIUM STEM	110 mm		
FLASHER	IC 555 & TIP 127 Transistor		
LED OPERATING CURRENT	30 mA		
BUZZER CURRENT	100 mA		
DIAMETER	Φ 60 mm		
LUMINOUS INTENSITY	RED 900 - 1200 mcd	AMBER - 400 - 900 mcd	GREEN 2000 - 2200 mcd
	BLUE 200 - 500 mcd	CLEAR - 800-1100 mcd	

ORDERING CODE

WITH BUZZER MODELS		WITHOUT BUZZER MODELS	
SMC -2T-1-(R/A/G/B/C) -(B/F/O)	24V AC/DC	SMC -2T-1-(R/A/G/B/C) -(F/O)	24V AC/DC
SMC -2T-2-(R/A/G/B/C) -(B/F/O)	110V AC	SMC -2T-2-(R/A/G/B/C) -(F/O)	110V AC
SMC -2T-3-(R/A/G/B/C) -(B/F/O)	230V AC	SMC -2T-3-(R/A/G/B/C) -(F/O)	230V AC

DIMENSIONAL DRAWING



BOTTOM VIEW
MOUNTING DETAILS

Connection Diagram

