

### FEATURES

- Easily installable module with plug in & replaceable SSR
- LED indication at output & flag for card identification
- Heat resistant & shock proof & Din rail mountable
- Back emf diode for high frequency switching protection
- TRIAC based SSR for longer & reliable operation
- Noise free operation & optical isolation
- No Contact bounce or arcing
- Ideal for temperature fluctuating situations
- Possibility of supply routing through flexible jumpers
- Stringently checked on various criterion of performance
- Longer functional life

### SPECIFICATIONS

<b>Operating Temperature</b>	0 to +50°C
<b>Input Voltage</b>	24V DC or 110V AC or 230 V AC
<b>Housing Cover</b>	Green
<b>PCB</b>	Double Sided Glass Epoxy
<b>Fuse</b>	Glass Fuse 5 x 20 mm
<b>Protection</b>	Inbuilt Snubber
<b>Switching</b>	Single Changeover 1 C/O

### SSR DATA

<b>SSR Type</b>	TRIAC based SSR
<b>Input</b>	4-32 V DC /4 -16mA
<b>LED Indication</b>	Green
<b>Output</b>	24 - 480 V AC
<b>On State Voltage Drop</b>	<= 0.3V DC
<b>I/P to O/P isolation</b>	2.5kV for 1 min
<b>Load Current</b>	2.5 Amp @ 55°C

### CONNECTION DETAILS

<b>Type of Connection</b>	Screw Connection
<b>Contact</b>	Phoenix or Vital or Wago
<b>Terminal option</b>	PCB Terminal Block
<b>Wire Cross- Section</b>	2.5 mm <sup>2</sup>
<b>Looping</b>	Jumpers for Common +Ve /-Ve
<b>Channels</b>	1,2,4,8

### SSR RATINGS

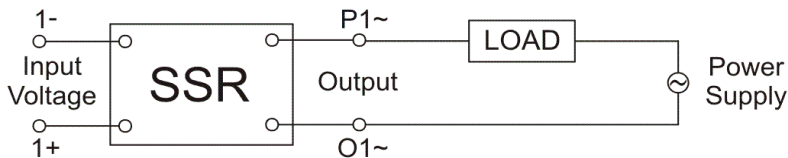
<b>Turn ON Time</b>	2.5 mS
<b>Turn OFF Time</b>	40 μS
<b>Output Load</b>	ON/OFF up to 0.5 hP
<b>Current Rating</b>	5A
<b>TRIAC</b>	Zero Cross Over
<b>Peak Inverse Voltage (PIV)</b>	800 V <sub>PK</sub>
<b>I<sup>2</sup> T</b>	340A <sup>2</sup> S for 9.6mS

### ORDERING CODE

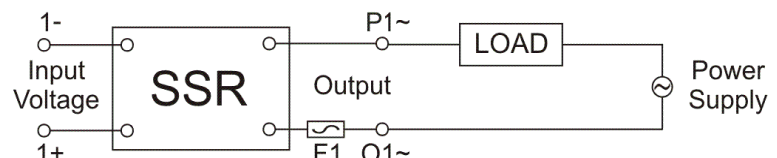
SMC01 SSR - 1C - DC TO AC	1 Channel without fuse	32 x 90 x 70
SMC01 FSSR - 1C - DC TO AC	1 Channel with fuse	32 x 126 x 70
SMC02 SSR - 1C - DC TO AC	2 Channel without fuse	40 x 90 x 70
SMC02 FSSR - 1C - DC TO AC	2 Channel with fuse	40 x 126 x 70
SMC04 SSR - 1C - DC TO AC	4 Channel without fuse	70 x 90 x 70
SMC04 FSSR - 1C - DC TO AC	4 Channel with fuse	70 x 126 x 70
SMC08 SSR - 1C - DC TO AC	8 Channel without fuse	132 x 90 x 70
SMC08 FSSR - 1C - DC TO AC	8 Channel with fuse	132 x 126 x 70

\* Dimensions(LxWXH) in mm

### CONNECTION DIAGRAM



DC - AC SSR Module



DC - AC with Fuse SSR Module

**SURYA MANUFACTURING COMPANY**

**AN ISO 9001 - 2008 CERTIFIED MANUFACTURER**